

# SR 836/Dolphin Expressway Southwest Extension

## Project Development & Environment (PD&E) Study – MDX Project No. 83618

MDX is conducting a Project Development and Environment (PD&E) Study to evaluate the feasibility of a southwest extension of SR 836/Dolphin Expressway from its current terminus at NW 137<sup>th</sup> Avenue in the vicinity of NW 12<sup>th</sup> Street to SW 136<sup>th</sup> Street or some point to the north of SW 136<sup>th</sup> Street, depending on the outcome of the evaluation.

The PD&E Study objective is to address the transportation needs of the area and evaluate potential social, natural and physical environmental impacts of the proposed project. The extension would be a new corridor that is envisioned as a multimodal limited access facility.

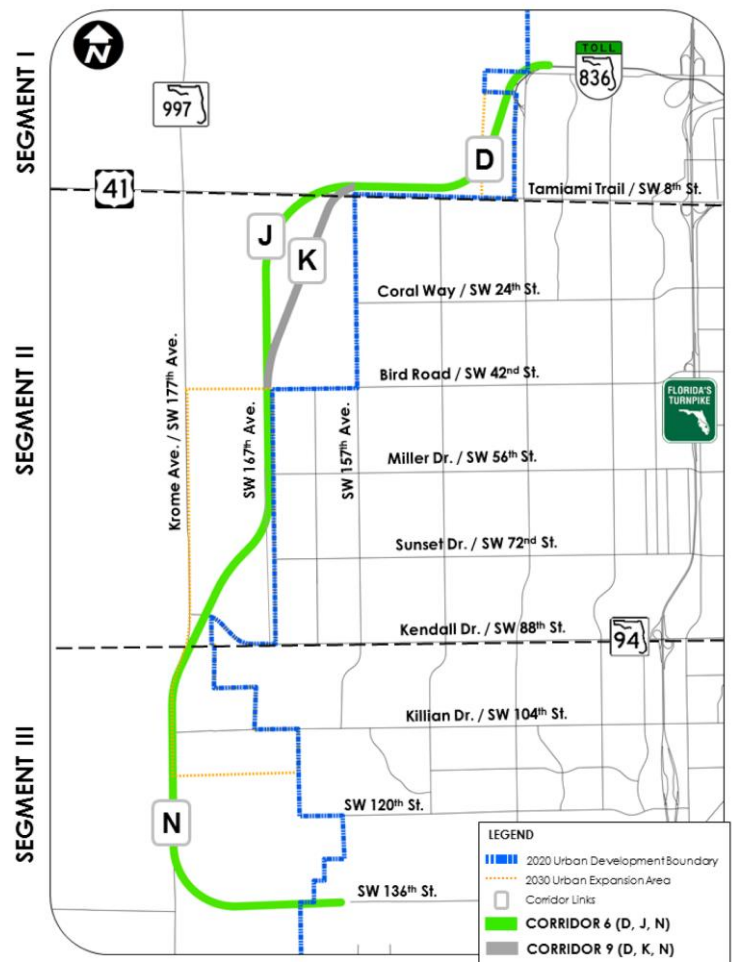
The PD&E Study is being conducted in two phases. **Phase I** includes a corridor analysis phase in accordance with the FDOT Alternative Corridor Evaluation (ACE) process. This phase includes a high level evaluation of multiple Alternative Corridors. **Phase II** involves the detailed Alternatives Analysis phase where the Alternative Corridors selected in Phase I are developed to a greater level of detail.

MDX has completed Phase I of the PD&E study. Based on the corridor analysis findings, public involvement and agency coordination, Alternative Corridors 6 and 9 are being recommended to move forward for further study in Phase II. The two corridors differ in a portion of Segment II, between Tamiami Trail (SW 8<sup>th</sup> Street) and Bird Road (SW 40<sup>th</sup> Street). This is shown on the map as gray (K) and in green (J). This recommendation was presented during the Corridor Workshop held on June 30, 2016 for public and agency input. These recommended Alternative Corridors represent the best opportunities for the SR 836/Dolphin Expressway Southwest Extension to meet the purpose and need, avoid and minimize environmental impacts, minimize costs and maximize User Benefits.

During **Phase II**, a more detailed evaluation of the two corridors identified will be performed. MDX will also identify opportunities to integrate multimodal solutions in coordination with the Miami-Dade Department of Transportation and Public Works (DTPW).

### Purpose and Need

The southwest area of Miami-Dade County has been the fastest growing area of the county with no additional major transportation infrastructure proposed to accommodate that growth. The Turnpike and the Palmetto Expressway alone cannot address the existing demand or the projected capacity needed to provide mobility in this area.





SAFE. CONVENIENT. RELIABLE.

This translates into longer commutes and a negative impact on the quality-of-life for Miami-Dade residents and businesses. A new SR 836/Dolphin Expressway Southwest Extension would provide additional north-south connectivity and enhance mobility throughout the area. The project would provide greater accessibility to major activity and employment centers located north and east of the rapidly growing residential areas in the south and west.

**Project Goals**

**Primary Goals:**

- Improve system connectivity
- Improve access to and from the area to major employment, educational and commercial centers
- Improve mobility for people and goods by providing north-south expressway access to serve existing and future travel demand

**Secondary Goals:**

- Improve hurricane/emergency evacuation routes and travel times
- Evaluate multimodal transportation opportunities to improve connectivity to the fast growing southwest area of Miami-Dade County

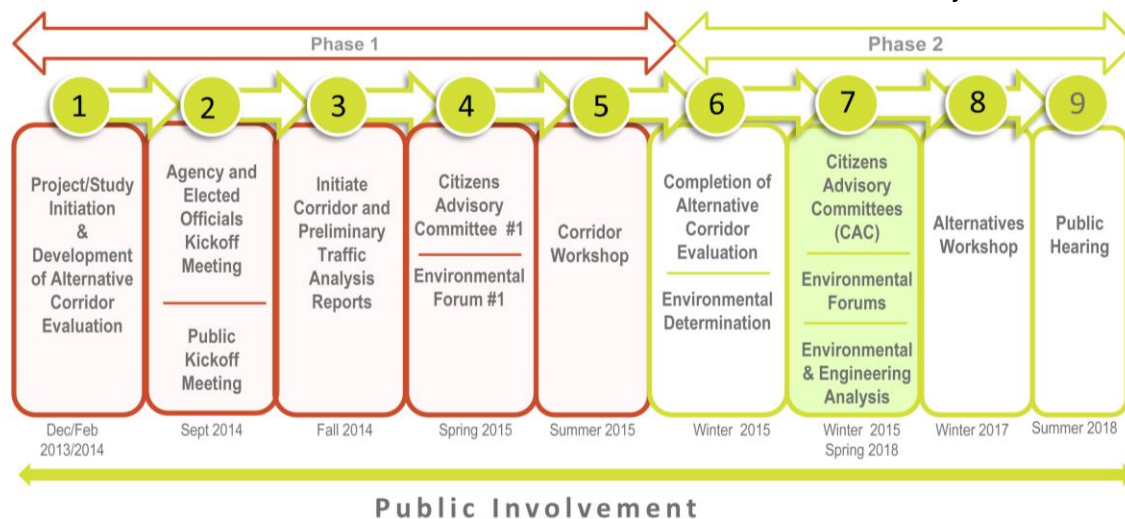
**Public Involvement**

MDX is committed to actively engaging the community, businesses, elected officials, as well as, community, civic, environmental organizations, and other interested parties in an ongoing and open dialogue about the SR 836/Dolphin Expressway Southwest Extension Study. MDX will continue convening meetings with the Citizens Advisory Committee as well as Environmental Forums. All these meetings are published in the MDX website. All MDX meetings are open to the public. Additional opportunities for public input during Phase II will be provided for the general public at an Alternatives Public Workshop and Public Hearing. MDX will continue to proactively engage agencies and stakeholders throughout the study.

**Schedule**

Phase I: Alternative Corridor Evaluation (ACE) process - **Completed**

Phase II: Evaluation of the Alternative Corridors recommended for further study in Phase II - **Ongoing**



**For More Information:** Contact Tere Garcia, Public Information Officer  
Phone: 786.277.9292 | E-mail: [836SWextension@mdxway.com](mailto:836SWextension@mdxway.com)

MDX operates and maintains five expressways: SR 112/Airport Expressway, SR 836/Dolphin Expressway, SR 874/Don Shula Expressway, SR 878/Snapper Creek Expressway, and SR 924/Gratigny Parkway. MDX is funded almost entirely by toll revenue and is dedicated to moving Miami-Dade County forward by making your commute faster and safer.